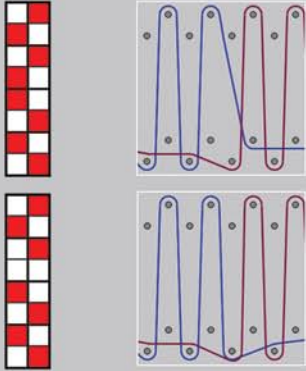


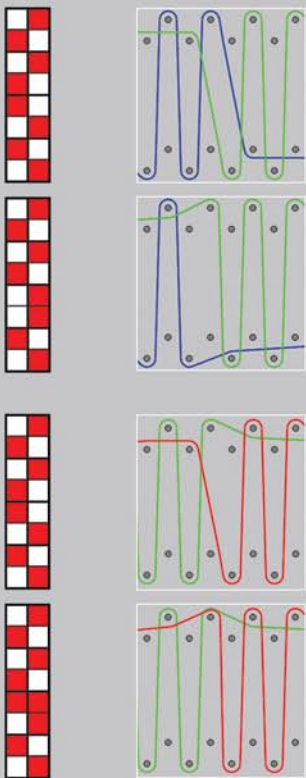
# designer

Number: 2/ September 2006

PATTERN GRADIENT: A STEP BEYOND IMAGINATION



## Carpet Weaver



## Multi-Color Patterned Gradient

■ Do you want to create magnificent designs?

Booria 2nd annual meeting, Gaziantep -Turkey

■ Designer Club

An opportunity to be a global designer

■ Booria Carpet Designer Pro+

Version 6.01 has been released

## Events...

- Modern Carpet Design Workshop - Ideas & Implementation - Tehran, Iran
- Booria - Textile Solutions Seminar - Kashan, Iran
- Domotex 2007 - Hannover, Germany



13-16 January 2007  
**DOMOTEX**  
 H A N N O V E R

# contents

|  |            |
|--|------------|
| <b>Editorial</b> .....                     | <b>2</b>   |
| Events .....                               | 2          |
| <b>What's New</b> .....                    | <b>3-4</b> |
| Carpet Weaver .....                        | 3-4        |
| <b>New Feature</b> .....                   | <b>5</b>   |
| Patterned Gradient .....                   | 5          |
| Booria, Version 6.01 .....                 | 5          |
| <b>Booria Designer, Look Inside</b> .....  | <b>6</b>   |
| Inherit Color & Shift Color Indexes .....  | 6          |
| Next in look Inside .....                  | 6          |
| <b>Designer Club</b> .....                 | <b>7</b>   |
| Ms. Manavi - Tehran Carpet .....           | 7          |
| <b>Close Up</b> .....                      | <b>8</b>   |
| Booria 2nd Annual Meeting, Gaziantep ..... | 8          |
| International Textile Exhibition .....     | 8          |

## The Designer Team

### Managing Director - Farzin Hariri

fhariri@booria.com

### Managing Editor - Pejman Salamati

psalamati@booria.com

### Graphic Designer - Azadeh Rahatlou

arahatlou@booria.com

### Carpet Designer - Mohammad Delasa

mdelasa@booria.com

## Publish by Booria Team

### Booria CAD/CAM Systems

2nd floor, No. 65, Khoramshahr St.,

Tehran, Iran.

PO Box: 14655-197

Tel.: (+98 21) 88739073, 88739048

Fax: (+98 21) 88769036

Web: www.booria.com

Email: info@booria.com



**Booria**  
CAD/CAM Systems

**Designed to lead**

## editorial



**Farzin Hariri**

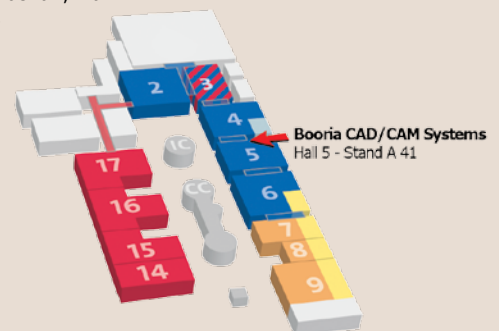
**H**ow to find solutions to suit our needs? How to find a solution to link to our previous and running technologies? How to link all production lines? Can we have a comprehensive solution to monitor and control all the activities from ordering to production and delivery? These are all questions which may ask yourself recently. This is not just your worries; many other managers and experts around the world ask these questions. This trend is epidemic around the world and Booria, as a well known CAD/CAM developer, understand these requirements and try to respond it as best as it could.

Booria's products in different field of textile, has been developed based on customer requests, this is Booria's mission, and completely compatible with customers expectations. Complete solutions, regular updates, continuous enhancements, adding new features in each product and finally new products, is the obvious commitment of Booria

toward its mission. This is the factor that caught Booria's customers' attention over a long period of time. Besides paying attention to customers' expectations, Booria will consider where and how its products will be placed in a production line. This will make Booria's products totally compatible with other machines in production line. For instance Booria Data Logger can monitor all the looms in the textile factories independent of loom type and kind of hardware and software products which each loom uses. Booria Carpet Weaver is also stand alone software which will support all common carpet weaving looms and converts designs to different machine file formats regard to created weave sets. Booria new product which will be definitely the next hit of the market will cover from the first step of ordering to products delivery and will be a comprehensive solution to monitor and control the important activity of a factory. This will define Booria new slogan, **Designed to Lead**.

## Events

- :: Modern Carpet Design Workshop - Ideas & Implementation - Tehran, Iran
- :: Booria - Textile Solutions Seminar - Kashan, Iran
- :: Domotex 2007 - Hannover, Germany



**Domotex 2007**

**Meet us at Hall 5, Stand A41**

### Carpets Speak More Technically

**B**ooria **Carpet Weaver**, the new products of Booria CAD/CAM Systems, is the necessity for the machine made carpet producers who work with electronic Jacquards or electronic selection boxes and tries to reach the best weave which suits each design. With this software producers can create their own weave sets or work with predefined ones, load their designs or directly send from **Booria Carpet Designer**, view their converted design and save the converted design in machine specific file formats.

This technical solution for machine made carpet industry, is an advance software which with its user friendly environment enables users to do their important tasks simply. Tasks like creating weave

sets, creating filters, defining denting and converting the designs can be done as best as it could due to graphical environment which the software provides its users for viewing, creating and editing.

**Booria Carpet Weaver** is suitable for processing the carpet designs and converting them into machine specific production data supporting, single, double and triple rapier, face to face and incorporate techniques.

This fabulous solution includes 4 main sections; Weave Set Editor, Converting Design, Cross section Viewer and Batch processing.

**Weave Set Editor**; enables users to create and edit weave sets base on their machine types, required technical specifications and design.

This technical feature accompanied with a graphical illustrator, cross section viewer, to reduce the difficulties of creating and editing weave sets and filters to omit the weaving defects and errors.

In Cross Section Viewer, users not only can see the weaves but also by a click can change and edit them. Double point effect and carpet folding creation can be easily done while can be viewed in cross section viewer.

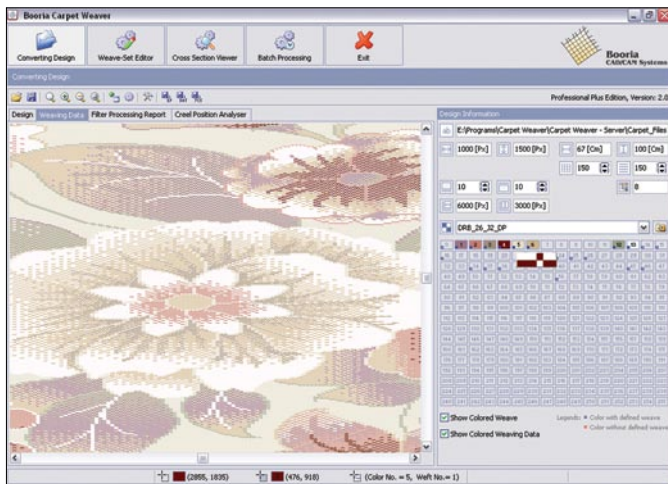
Weave Sets Editor also support different types of filter creation. 3 methods of filter creation are supported, Description Based, Index Based and User Defined Based.

This makes the filtering function more flexible and user can create filters based on bottom or top layer, color indexes or their desired method re-

spectively. Created new weave sets, can be saved and again loaded for further activities and are compatible with all kind of carpet weaving looms.

**Converting Design**; after weave set creation, user can open a design, which can be sent directly from **Booria Carpet Designer**, and then define a weave set. The software will convert the design automatically and very fast while creating the peg plan of the design for viewing. The converted design can be saved in different machine file formats like: EP, JC5, DAT, and DES (Booria's Loom Controller file format).

**Cross Section Viewer**; After design conversion, users can view the whole design in cross section format and find out how the design is going to be

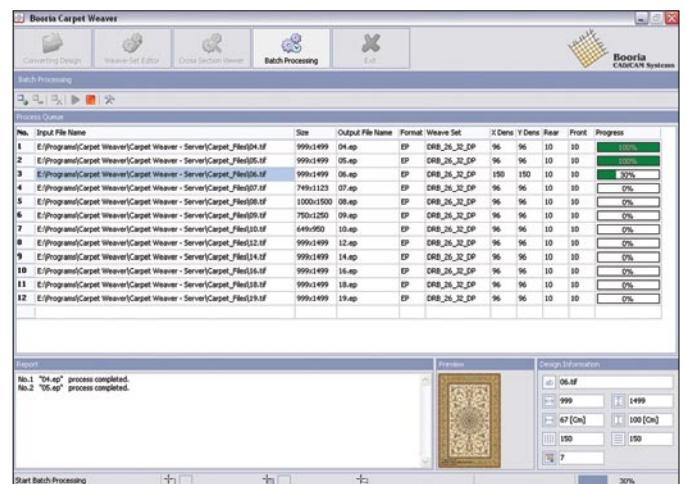
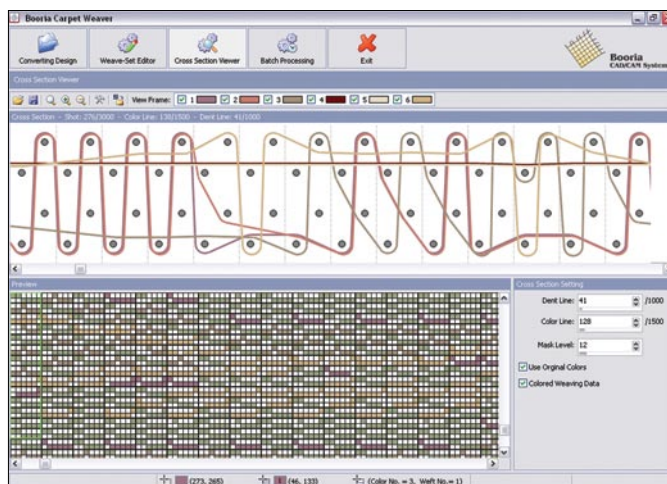
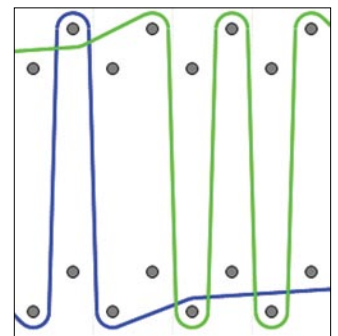
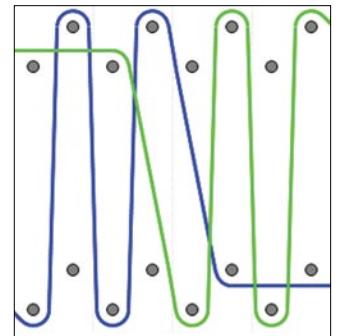
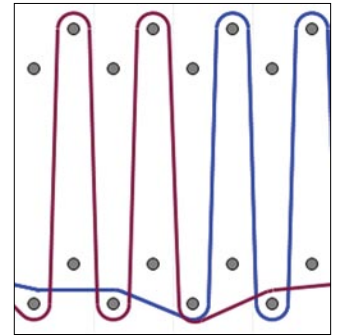
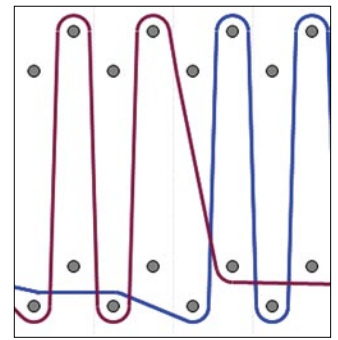


before production and eliminate the weave mistakes manually. In this feature users can scroll the dent line or enter the dent line number to find the required dent line and view its cross section. It is also possible to view the cross section with design colors to understand and follow each frame easily. Also masking one or more colors in cross section view is possible.

**Batch Processing**; this unique feature of **Booria Carpet Weaver**, enables users to convert different designs with different weave sets into different machine file formats just in one window and by one click. Users can also call this function directly from **Booria Carpet Designer** and send tens of designs from Designer into the Weaver by just one click.

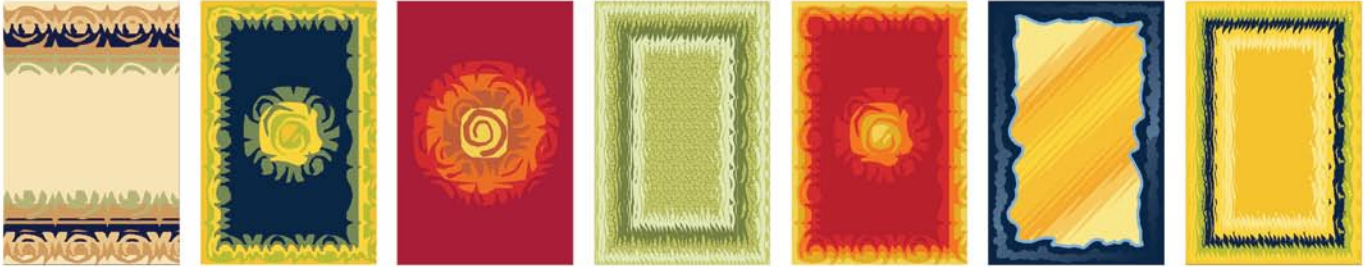
## Features:

- :: Support single, double and triple rapier machine types
- :: Ability to create weave sets, basic weaves and filters
- :: Cover basic weave sets
- :: Cross Section viewer, for viewing, creating and editing basic weaves, weaves and filters
- :: Support double point and carpet folding
- :: Support 3 position Jacquards
- :: Advance filter design solution
- :: Automatic mix contour and double worker filter creation
- :: Ability to view the peg plan of the design in cross section view window with original design colors
- :: Ability to select a frame and define mask levels for viewing the frame behaviour in desired dent line
- :: Ability to create up to 32 filters in 3 methods; Index Based, Description Based and User Defined Based
- :: Support denting for odd number of frames
- :: Support all common graphical file formats
- :: Ability to change warp and weft densities
- :: Ability to show peg plan of a converted design in two ways; two colors (white and red) and with colors of the color Palette
- :: Demonstrate each colors weave in the color palette with a tool tip
- :: Change the color position in the color palette with drag and drop
- :: Support EP, JC5, DAT and DES files
- :: Batch processing
- :: Connect directly to Booria Carpet Designer



# new feature

## Patterned Gradient



Designed by Mohammad Delasa

All designs created just in a few minutes **only** by Booria Multi Color Patterned Gradient tool

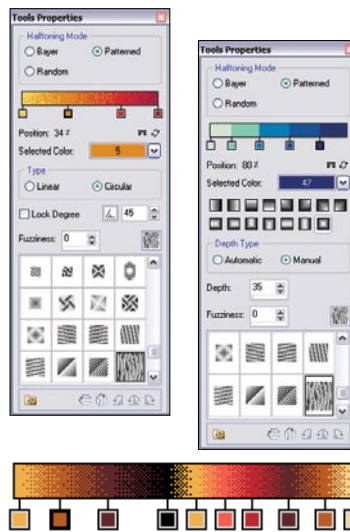
**B**ooria Gradients, are outstanding tools which make Booria different from peer software products.

Various kind of gradient implementations let designers reach to the desired effects for modern carpets easily.

Multi color gradient for creating smooth transition effects between two or more colors (up to 16 colors), Normal Gradient for creating transition effect between fore color and back color in dithering and half toning method in different directions and gradient type, Color Course Gradient for creating transition effect between two color while designer can define where the desired color should be dominant and finally Contour Gradient for creating transition effect between two and more colors based on contour effects are 4 types of gradient implementation which only **Booria Carpet Designer** supports. These great tools become more complete by adding a new tool properties, multi color patterned gradient and patterned contour gradient, now (Pro+ Edition Version 6.01). This newly developed property which is unique and state of the art is the combination of pattern and gradient effect creating and makes designers to implement gradient effect with a selected pattern. With this new property, designers

### Set of tools to transform ordinary designs into extraordinary artwork

can create multi color gradient patterns with a definable pattern. The pattern can be selected from a list and designer also can add new patterns to the default list for future usage. Gradient implementation can be performed in linear and circular methods (Multi color gradient) or as Contour Gradient. In each method designer can select gradient direction or depth and fuzziness of gradient to find its desired effects. This tool new property besides the other 66 ways of gradient effect creation makes the gradient tools of Booria more enhanced and unique and all together make designers create with same colors different effects which completely fit their design.



### Booria Carpet Designer, Version 6.01 has been released

September 11, 2006

Version 6.01, the new Booria Carpet Designer version, officially released one month after version 6.00 and includes 18 new features and enhancements. Some of the new features and enhancements are:

- :: New Patterned gradient option in Multi-Color Gradient and Contour Gradient tools
- :: New "Add Basics" function in Guidelines dialog
- :: New features in Color Information dialog:

- New "Propagate" option in price calculation
- New option for "Double Points Selection"
- New option for "Calculating price based on gr/knots"
- New "Color Name" fields in reports

- :: New "Average Color" and automatic "Double Point" option in Pile and Loop Combiner dialog
- :: New "Average Color" option in Edit Color Palette dialog
- :: New features and enhancements in Print dialog
- :: New Carpet Print dialog
- :: New Color Range option for Magic Pen tool
- :: Supporting Persian and Turkish languages
- :: and more

Wants to know more, get in touch with:  
**psalamat@booria.com**

Booria Carpet Designer, Version 6.01

# carpet designer, look inside

## Inherit Color & Shift Color Indexes

### Be on tour in Booria Carpet Designer

Create and save up to 16 or 32 different color ways of one design (depends on the number of colors in each color palette) in a single file. In Booria Carpet Designer users are able to transfer different color ways to the one design color palette and create one design with different color palettes. To view and change design color ways, users can use Edit Color Palette or Shift Color Indexes functions.

#### Step 1:

Open source design, the design which its color palette required. Then open destination design, the file which source design color palette will be copied to, and make the destination design your active window.

*Fig No1: Number of colors in source design = 6 (7 indexes with Jute)  
Number of colors in destination design = 6 (7 indexes with Jute)*



#### Step 2: Inherit Color from

In this dialog, first define the starting and lasting indexes of source design color palette, the colors which you want to transfer, and then select the destination starting index, from where the transferred colors will be copied. Please note; you can also transfer only used colors of a palette to the destination color palette and do not allow creating duplicate colors.

*Fig No2: All six colors (7 indexes) will be copied from index 16 of destination design*

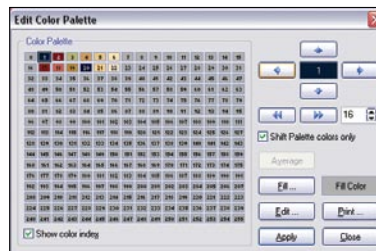


For creating color ways from the saved color palettes you have two ways:

#### Step 3-1: Edit Color Palette

After entering shift value, the design will be shown with new color palette. Please remember if you select, Shift Palette colors only, the selected colors will be copied to machine color indexes. If not, the indexes will be shifted. In both ways the deduced color ways are same.

*Fig No3: Select "Shift Palettes colors only", then enter number 16 and press [Left Arrow], the carpet will be viewed with the second color way, while the color indexes are correct and suitable for design conversion.*



#### Step 3-2: Shift Color Indexes

In this dialog you can change the color ways of one design within the different saved color palettes. Just enter the shift value then the color indexes will be shifted to the new.

*Fig No4: Enter number 16 in the left bottom corner field; carpet will be viewed with the second color way, while the color indexes are shifted without changing color palette but are not suitable for design conversion*



#### Tips



**When do we use Edit Color Palette or Shift Color Indexes**

:: want to shift color way in a **selected area**, use Shift Color Indexes

:: want to shift index of each color separately, use Shift Color Indexes

:: want to keep machine color indexes and only shift colors, use Edit Color Palette, while "Shift Palettes colors only" are checked

#### Carpet Weaver:

How to create filters to remove weaving defects with Booria Carpet Weaver?

Step by step become more familiar with easy filter creation method.

Next in look Inside

## Ms. Manavi - Tehran Carpet

Next issue yours? contact us

been considered so it gives him a pleasant and new feelings.

One of the advantages of machine made carpet in comparison with hand made carpet is the ability to produce a design regard to customer order. This is due to increase of designing and production speed which makes the products varied and different.

This also makes the designers work more critical. Because its design is not like a painting, only painted once and hang on a wall. Mass production is one the advantages of the industry, so hand work of the designer will be produce in huge numbers which should enter a market with different customers' taste. So designer besides the designing and coloring knowledge should have enough information about weaving looms and procedure and know the customers' appetite.

Color is also inseparable from design. The composition between color and design needs experience and extraordinary skill. Due to color limitation in machine made carpets designer can not play with colors and should select best colors or implement techniques to reach the colorful effects which this also needs experience and skill. This means, designers should be familiar with weaving techniques.

Software solutions for designing ease the implementation of ideas. So designer can create artistic works very fast without any limitation and can even see the resulted design before production. This helps them to create designs more compatible with customers' expectations and customers' dignity. (Ms. Poopak Manavi Rad, Sep. 2006) ■

**P**ersian rug fame, pleasant designs and skills of dyers and weavers are the valuable sources for Iranian carpet industry. These valuable sources are the supporters of designers which with implementation of the new concepts and tools try to develop this art as best as they could. New technologies in designing and weaving carpets give this artistic activity another side, Industrial. With the help of new technologies, designers can design faster with more creativity, and their master pieces will be entered every house with different social level.

Creativity, invention and being up to date are the keys to success. Being familiar with new concepts and modern knowledge will lead designers to these keys. Now a day, Iranian designers with inspiration of their ancestors' experiences and usage of new inventions and technologies create lasting master pieces.

Designing which is the most important activity in carpet production, are being categorized in three sections: Classic, Modern and Composite

Classic design; always pay attention to the structures which transfer through different period of times and these structures give the design an identity. Designer should create new designs regard to these structures. In classic design, lines are basic and connections between them form the motifs. If the connection points between these lines have a defined angle it becomes geometrical. Medallions, corners and borders are 3 most important design elements in classic design

Modern Design; designers are free to design and they do not have to consider any predefined rules for designing. They only pay attention to color, form and composition. These designs can be completely abstract



Ms. Poopak Manavi Rad, head of design in Tehran Carpet Company, born in 1971 and now is experienced designer in **Booria Carpet Designer**. (poopak\_m@yahoo.com)

### Creativity, invention and being up to date are the keys to success.

or inspired of tribe and Gabbe designs. These designs are graphical and have mild colors with harmony and most welcomed by the customers.

Composite Design; designer will combine classic motifs and elements with European motifs and elements which creates new and unique designs. In modern design variety and alternation are a lot. Consumers see a carpet which seems to have classic design but in its design all classic rules and structures has not

### Designer Club

#### An opportunity to be a global designer

By joining **Designer Club** you can:

- :: Create your profile and send it to Booria tbe in touch with more than hundreds carpet producer around the world
- :: Join **designer** forum
- :: Have opportunity to publish your ideas in a newsletter which will be distributed among more than hundreds decision makers around the world
- :: Participate in online designing sessions, for becoming more familiar with Persian and traditional design

For more information do not hesitate to contact: [psalamati@booria.com](mailto:psalamati@booria.com)

## Booria 2nd Annual Meeting, Gaziantep

The 2nd annual meeting of Booria CAD/CAM Systems in carpet city of Turkey, Gaziantep, was ended with this statement:

**"Booria Carpet Designer is the best tool for classic and artistic designing of carpets".**

In this great event which held in "Chamber of Gaziantep Industry" on 29th July 2006, designers, managers and experts from Turkish carpet industry were participated.

An opportunity was provided to participants to experience how Booria will help them not only retouch and edit modern designs like peer products software but also create fabulous classic and Persian designs. "Creativity and skill do not limited with Booria's special drawing tools and functions and a designer can transfer its ideas freely through its digital pen" said Mr. Farzin Hariri, General Manager of Booria CAD/CAM Systems during this nearly 4 hours meeting. Abilities of the new version of Booria Carpet Designer are presented to the participants and demonstrated how the advance tools and functions of this great solution help them create artistic effects for modern and classic designs which other common graphical solutions, even other dedicated textile designing softwares can not handle it!

In addition to welcoming speeches of Booria General Manager and general manager of Graphic Color company, Booria's partner in Turkey, experts from these two companies provided useful information for the participants about the importance of designing in textile market, the main touchstone in traditional and modern designing, importance of design and color, technique for making fast and best design with Booria Carpet Designer and the latest version and the new features of Booria Carpet Designer.

Besides the speeches and presentations which scheduled as best as it could, Booria again came up with two special occasions:

In this meeting, Booria showed its respect toward the customers' ideas and suggestions by presenting a gift to one of its active and energetic users who cooperates with Booria by providing suggestions and reports about Booria Carpet Designer.

A Booria Carpet Designer Professional Edition was rewarded to Ms. Nese Boz (from Covtex Feizy) for her cooperation and activity.

And again like the previous year, a great surprise for participants.

A Booria Carpet Designer software awarded to one of the participants who drew the winning ticket.

This event, like the previous year, was a success for Booria CAD/CAM Systems, and enforced Booria's connection with its customers in Turkey ■



## 12th International Textile Exhibition of Tehran

### Booria's Products, Designed to Lead

Booria CAD/CAM Systems was displayed its advance solutions in the most important textile event in Iran, 12th International Textile Exhibition 19-22 August 2006.

This great event was the best opportunity for Booria to meet all the customers who are currently users of Booria CAD/CAM Solutions. Up to now hundreds of Booria's products have been installed in more than 80 factories in Iran. All the famous carpet producers in Iran like Mashad Carpet, Setareh Kavir, Savin Carpet, Tehran Carpet, Sahand Carpet, Solomon Carpet and ... are currently users of different carpet solutions of Booria CAD/CAM Systems.

Due to publicity of Booria Carpet Designer, new edition, Carpet Designer Pro+, many of the visitors attended the presentation shows to study thoroughly this software and became familiar with its abilities. The new comers form the major visitors of Booria's textile solutions. Booria's Solutions like Carpet Designer, Carpet Studio, Carpet E-Catalogue, Data Logger, Loom Controller, Jacquard Designer and Dobby Designer. Data Logger which is a high-tech data acquisition system and a core tool to the understanding, control and management of processes was the first hit of the visitors. Due to intense market many of the producers looking for the solutions which monitor their production line and provide them reports to reduce the costs and increase their productivity and efficiency. Data Logger is such a product and caught the attentions of many visitors.

Booria's products due to its different characteristics always attracts visitors, and this time Data Logger was the one which makes this event as successful as the previous years ■